

1" H.D. EXTENDED ANVIL AIR IMPACT WRENCH (Twin hammer)

MODEL: AT-9901

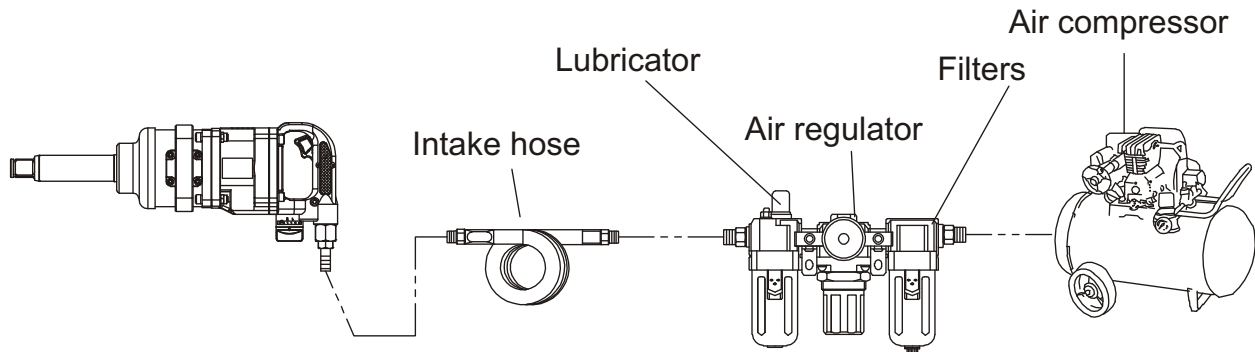


Figure 1

Air tools use and maintain notice

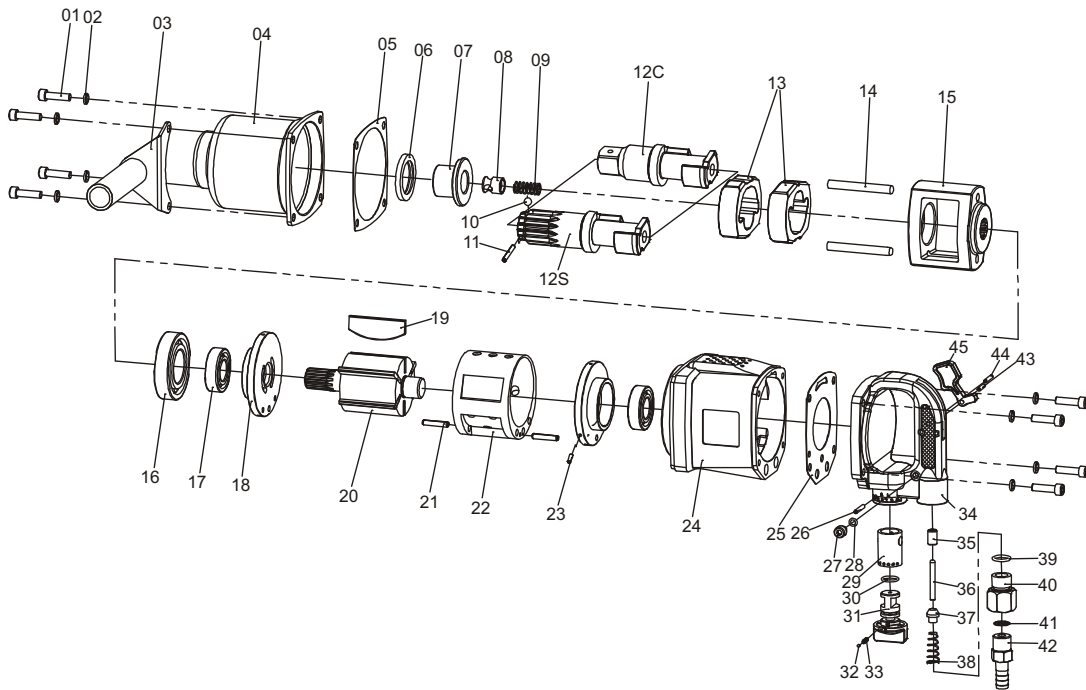
1. This tool should use spindle oil or sartorius oil (sew machine oil), do not use common or recycle oil, or components will be destroyed.
2. Air pressure should be at 6-8 Kg/cm² when tools work, lower air pressure would not be able to play tools capacity, higher pressure will rapidly reduce tools life.
3. In order to keep normal operation, please install filters on air compressor, air regulator, lubricator. (See Figure 1)
4. If there is no lubricator, should be oiling to machine specified mouth filling before and after working, so that can play the best function.
5. Regularly check whether there is sewage or impurity on screen, if any, should obviate sewage and impurity timely. (usually once/week)
6. Check whether the leakage of air hose and fittings, and loose, to prevent low air pressure that enter into the pneumatic tool.
7. Check pneumatic tools and pneumatic tools accessories whether there is a loose connection to prevent damage to tools or injury to person when adjust or rotate accessories.
8. Non-pneumatic tools accessories are not allowed to use on pneumatic tools.
9. In case the machine does not turn or rotation is not smoothly, please fill a large number of spindle oil or sewing machine oil in the oiling mouth, and boot-strap start rotate, cleaning dirt, obstacles for three or two times consecutively, if failure, please sent to dealers to rectified.

SPECIFICATIONS

- Square drive: 1"
- Capacity bolt size: 1-3/4" (45 MM)
- Free speed: 3,200 RPM
- Max. torque: 2,730 FT-LB (3,700 N-M)
- Air inlet (PT): 1/2"
- Air hose (ID): 1/2"
- Avg. air consumption: 40 SCFM
- Working pressure: 115 PSI (8.0 BAR)
- Weight: 13.80 KGS (30.36 LBS)

1" H.D. EXTENDED ANVIL AIR IMPACT WRENCH (Twin hammer)

MODEL: AT-9901



Part No.	Description	Qty.
01	Hex screw	8
02	Gasket	8
03	Assist handle bracket	1
04	Hammer case	1
05	Gasket	1
06	Oil seal	1
07	Anvil bushing	1
08	Valve	1
09	Spring	1
10	Steel ball	1
11	Pin	1
12	Anvil	1
13	Hammer	1
14	Pin	1
15	Hammer cage	1
16	Bearing	1
17	Bearing	2
18	Cylinder cover	2
19	Vane	6
20	Rotor	1
21	Pin	2
22	Cylinder	1
23	Pin	1

Part No.	Description	Qty.
24	Housing	1
25	Gasket	1
26	Pin	1
27	Hex screw	2
28	O-ring	2
29	Valve bushing	1
30	O-ring	1
31	Direction pole	1
32	Steel ball	1
33	Spring	1
34	Handle	1
35	Throttle bushing	1
36	Throttle valve pin	1
37	Throttle valve	1
38	Inlet spring	1
39	O-ring	1
40	Air inlet	1
41	Air inlet screen	1
42	Hose connector	1
43	Pin	1
44	Pin	1
45	Trigger	1